

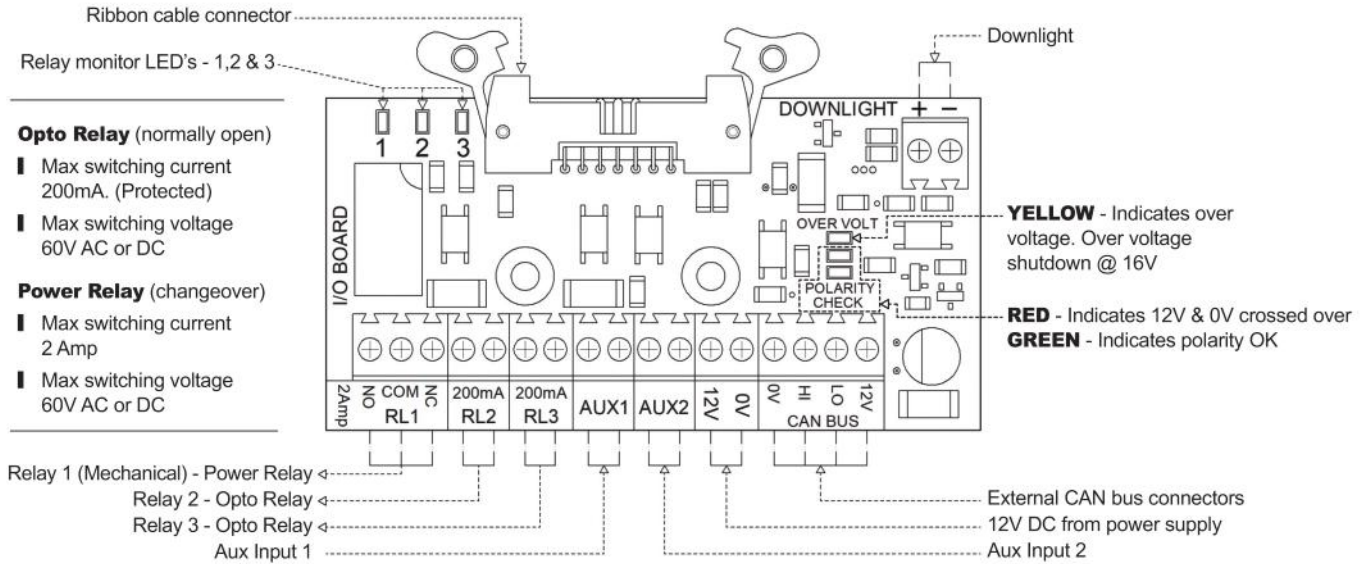
4G LTE INTERCOM

INSTALLATION GUIDE

4G LTE I/O BOARD CONNECTIONS



A SITE SIGNAL NETWORK TEST IS TO BE UNDERTAKEN BEFORE INSTALLATION



4G LTE PCB CONNECTIONS

INSTALLATION TIPS

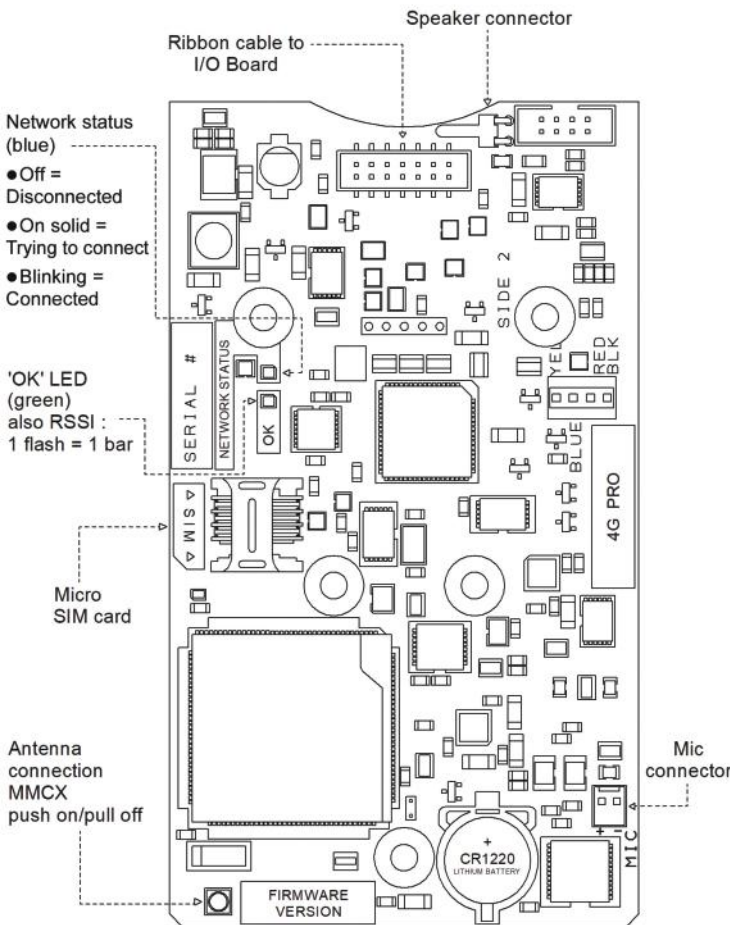
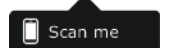
- Use the positioning template for the siting of the mounting holes.
- Ensure the unit is sealed to prevent water ingress.
- Use electronic grade silicone sealant to seal around all rear entry holes.
- Ensure antenna and power leads have a loop before entering the back of the unit to prevent water ingress along the cable.
- Use the black plastic gland M20 x 1.5mm, std electrical thread to secure the power and aerial leads.
- If drilling out the backbox or steel posts, no metal filings must be left in the backbox. The speaker has a magnet and may attract metal filings. Brush out the back box of all debris before screwing in the faceplate.
- Do a 4G signal test with a 4G analyser to ensure installation of the best sim card.
- Ensure the unit is turned off before inserting/removing the SIM and plugging in/unplugging the aerial.
- LED status lights: Green OK LED is multi purpose, it shows correct antenna connection, correct sim card installation and signal strength (RSSI).
- The blue LED is the network status LED.
- Use the faceplate parking slot for ease of installation.
- We strongly recommend the PIN Defaults are changed at the point of installation.
- For full installation manual visit www.telguard.co.uk/support

The 4G antenna is an external item that should be installed in the most suitable position so that maximum signal strength is obtained and is more than 200mm from a human body.

This positioning should also allow for avoidance of any likely vandalism as is able.



Raising Standards
Safety Assured



EU CE Declaration of Conformity and Radio Equipment Directive is available at www.commtel-uk.com | GB-RH10 9XN



'COMMTEL GSM ONE' APP

APP GUIDE

ADDITIONAL MANUAL SMS COMMANDS

- Where you see SERIALNUM in the command alert, replace with the SERIALNUM of the panel to be programmed.
- Text the commands to the 'tel number' associated with the panel you wish to program.
- Activate Timed Trade Button**
To set up the trade button 07:00 to 17:30 Mon-Fri, first set the Time Profile by sending SERIALNUM profile 1 start 07:00 end 17:30 days Mo Tu We Th Fri. And then set the Trade Button to use it by sending SERIALNUM trade periods 1 relay 1 pulse
- Deactivate Timed Trade Button**
To turn off the Trade Button, send the command SERIALNUM delete trade
- Activate Aux Input 1 Triggered SMS Alerts**
To set up SMS alert when aux input 1 is triggered for more than fifteen minutes and send the message to 'tel number'. SERIALNUM alert 1 aux 1 delay 900 send 'tel number' msg Your gates have been open for 15 minutes
- Deactivate Aux Input 1 Triggered SMS Alerts**
To turn off the aux input 1 SMS alert, send the SMS command SERIALNUM delete alert 1
- Activate Recurring SMS Alerts**
To set up SMS alert which is sent at regular six monthly intervals, starting on the 20th of November at 2.30pm and sending the SMS to 'tel number', send the SMS command SERIALNUM alert 5 recur every 6 months next 20/11/2019 14:30 send 'tel number' msg Your gates are due for servicing
- Deactivate Recurring SMS Alerts**
To turn off the recurring SMS alert, send the SMS command SERIALNUM delete alert 5
- Check the Signal Level**
To find out the mobile phone signal level of the panel, send the SMS command SERIALNUM get signal and wait for the reply