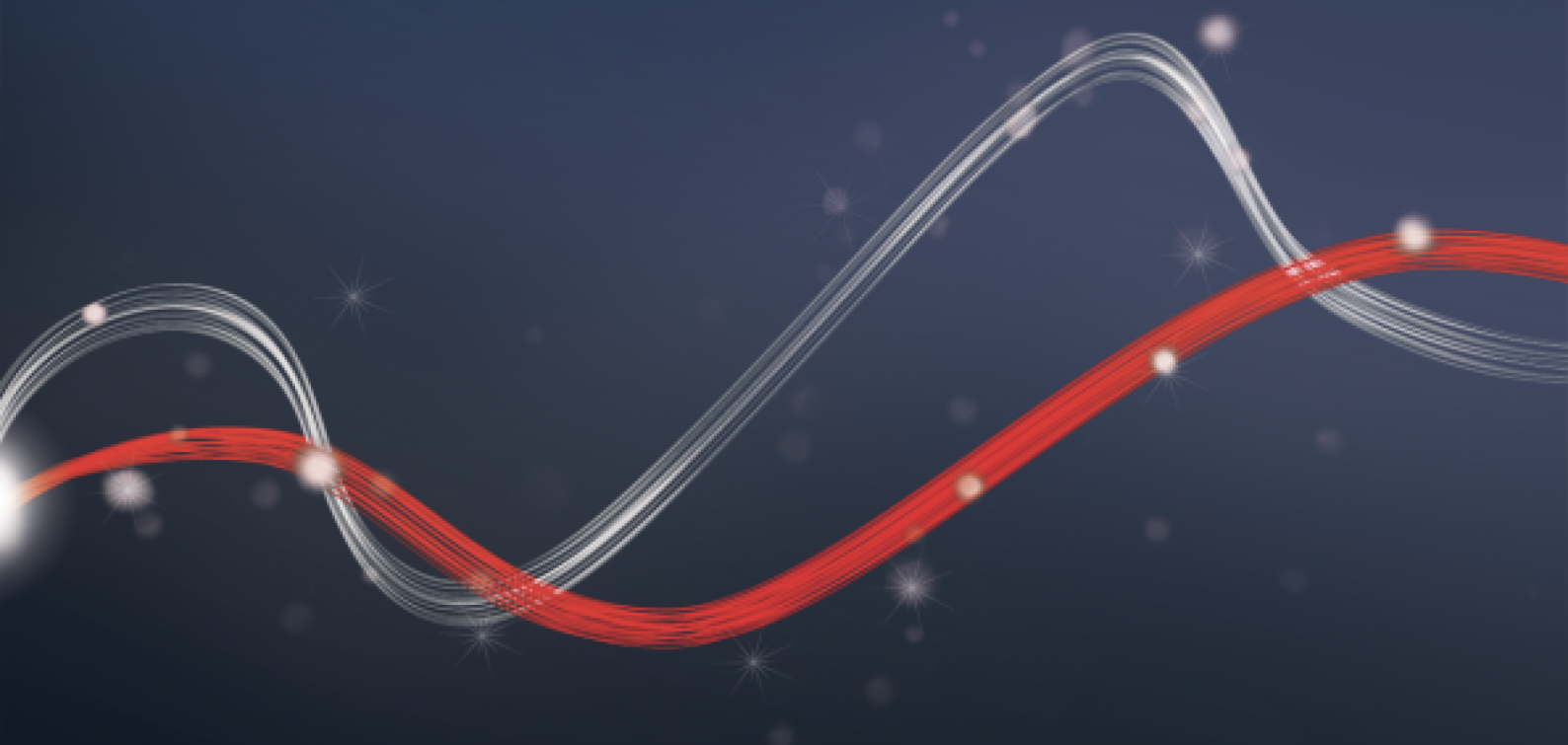




Be ahead

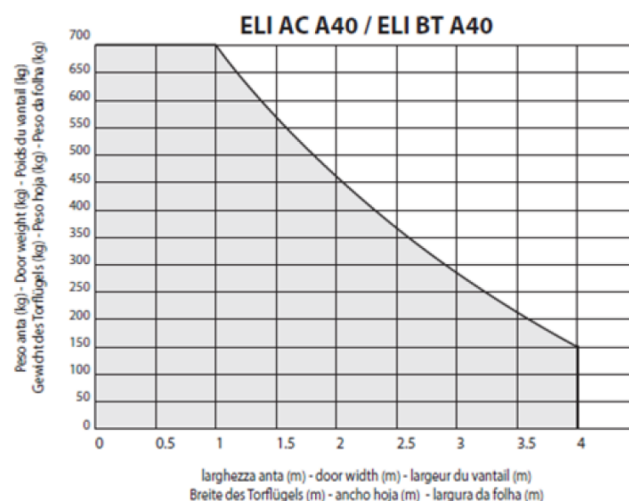
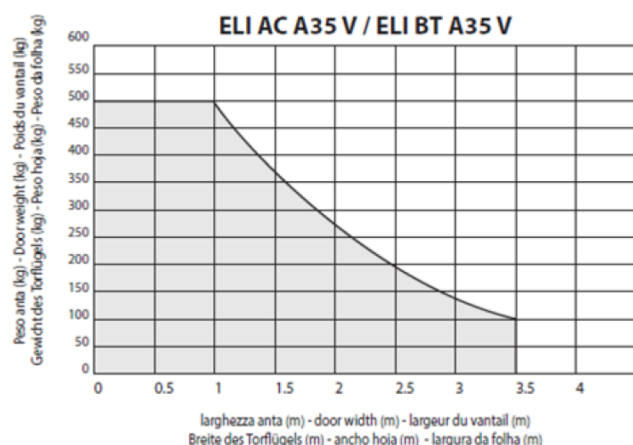
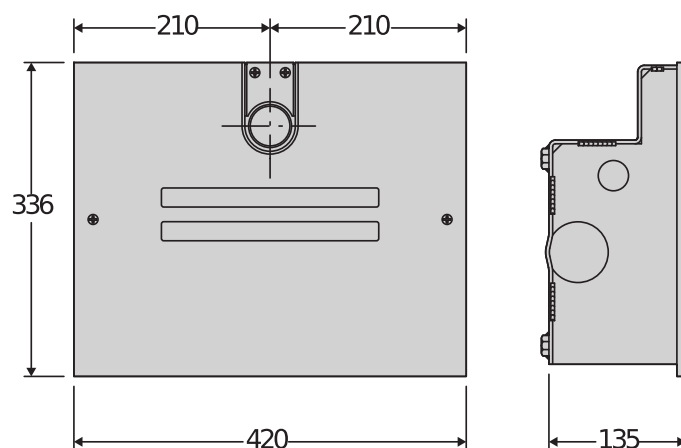
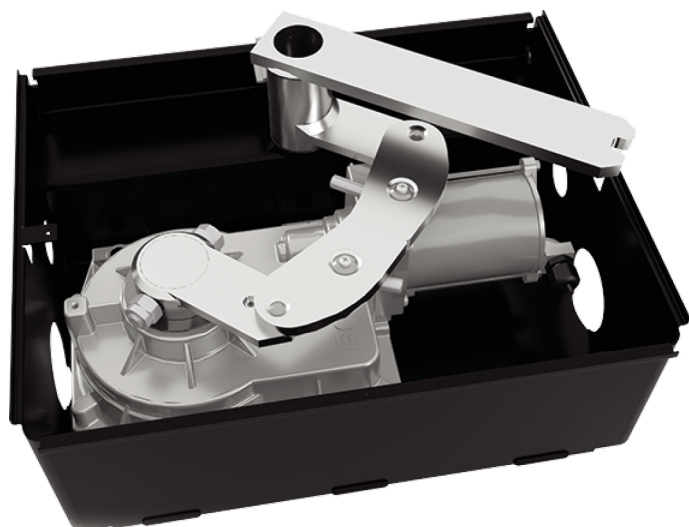


# ELI BT A





## Electromechanical automation systems for swing gates



A complete range of in-ground non-reversible electromechanical operators for swing gates up to 4m long with 24V technology. The integrated mechanical stops for both opening and closing, allowing the option of a simple installation by reducing the need for physical stops. The encoder-based limit switch system offers precision and quick installation.





## Electromechanical automation systems for swing gates

### Relevant features



**Fast**



**Encoder**

**Super fast BT35 motors:** Maximum comfort. Fast opening is ideal for sites which require reduced waiting times meaning you can quickly clear busy or hazardous roads. Fast closing can help to improve security keeping the property safer from intruders.

**BT motors with relative encoder:** No more need to assemble and adjust the limit switches, reducing installation time.



**New secondary arm:** quicker and more secure attachment to the primary shaft, for a more reliable installation!



**New composite crown XECARB (BT A 40):** developed with carbon fiber reinforced polymers, widely used also in sports and air-space, it allows the use on heavier gates and longer life.



**Integrated mechanical stops:** for both opening and closing, allowing the option of a simple installation by reducing the need for physical stops.





## Electromechanical automation systems for swing gates

### ELI BT A

Code	Name		Description
P930133 00002	ELI BT A35 VELOCE		Underground electromechanical operator 24 V for swing gates up to 3.5 m in length. Relative encoder limit switches
P930134 00002	ELI BT A40		Underground electromechanical operator 24 V for swing gates up to 4 m in length. Relative encoder limit switches

#### THALIA: Control panel with display for one or two 24V electromechanical operators for swing gates



##### D113745 00002 - THALIA - Recommended



- Application: control panel with display for one or two 24V electromechanical operators for swing gates
- Card power supply: 230 V single-phase
- Operators power supply: 24Vdc 180W max each operator
- Main features: new standard colour removable terminal blocks, simplified scenario-based programming with display and integrated dual-channel receiver, D-Track anti-crushing system, slowdown during opening and closing and electronic self-learning.
- Main functions: automatic re-closing, fast closing, partial opening, deadman feature
- Compatibility: LIBRA C MA, LIBRA, LIBRA R, LIBRA MA R

	ELI BT A35 VELOCE	ELI BT A40
Motor voltage	24 V	24 V
Compatible control unit	THALIA, THALIA P	THALIA, THALIA P
Max. width of door/gate wing	3,50 m	4 m
Max. length gate panel without electric lock	2 m	2,50 m
Max. motor torque	250 Nm	350 Nm
Max. opening cycles per hour	50	Continuous
Maximum angle	120 °	120 °
Speed	2 Rpm	1,10 Rpm
Opening time to 90°	10" (with slowdown)	14" (with slowdown)
Limit switch standard	Relative encoder	Relative encoder
Limit switch optional	Magnetic	Magnetic
Mechanical stops	OP+CL	OP+CL
Release	Lever or lever with personalised key	Lever or lever with personalised key
Impact reaction	Electronic clutch (with control panel)	Electronic clutch (with control panel)
Protection rating	IP67	IP67
Environmental conditions	-20 ÷ 55 °C	-20 ÷ 55 °C

## RECOMMENDED ACCESSORIES

	N733397 - BTCE 120 E		N733398 - BTCE 120 E INOX
	Foundation box with levers for ELI AC A, ELI BT A. Release not supplied		Stainless steel foundation box with levers for ELI AC A, ELI BT A. Release not provided



## Electromechanical automation systems for swing gates

### RECOMMENDED ACCESSORIES

	N733392 - <b>SCC</b> Release for ELI AC A, ELI BT A and SUB BT with lever key.		N733502 - <b>SCP</b> Release for ELI AC A, ELI BT A and SUB BT with personalized key.
	N733304 - <b>E180</b> Accessory for opening to 180 ° for ELI AC A, ELI BT A operator		<b>new</b> N733951 - <b>FCE</b> Magnetic limit switches for BT and AC models.
	<b>new</b> P111782 - <b>COMPACTA A20-180</b> Pair of photocells adjustable 180 ° horizontally. Range 20m. Power supply 12 – 33Vac / 15 – 35Vdc		<b>new</b> R400009 - <b>KIT COMPACTA - PHP</b> Kit complete with a pair of aluminum posts for photocells height 522mm and a pair of Compacta A20-180 photocells adjustable 180° horizontally, range 20m, power supply 12 – 33Vac / 15 – 35Vdc
	<b>new</b> D114094 00003 - <b>RADIUS LED BT A R0</b> Flashing light without incorporated antenna for motors with power supply 24 V.		<b>new</b> D114168 00003 - <b>RADIUS LED BT A R1 W</b> Flashing light with built-in antenna for motors with a 24 V power supply. White flashing light.
	<b>new</b> D114093 00003 - <b>RADIUS LED BT A R1</b> Flashing light with incorporated antenna for motors with power supply 24 V.		





## Electromechanical automation systems for swing gates

# What is U-Link?

The technology that gives you more power

U-Link, Universal Link, is an exclusive BFT platform that can be used to create high-tech ecosystems.

In Home Access Automation, it can be used to communicate with all home access automation devices of any brand. This saves you time and allows you to control everything easily and without any worries.

### It is intuitive

Easy to install and to use

### It is scalable

You can add as many devices as you want

### It is flexible

It allows you to create groups of interconnected products

### It is practical

Works with or without an internet connection

### It is functional

Its settings can be controlled remotely using dedicated applications





## Electromechanical automation systems for swing gates

# Everything on one screen: find out more about this amazing technology

A world-exclusive platform that **can be used to create high-tech ecosystems** offering a vast range of solutions for many different sectors.

This proprietary platform which is a key feature of BFT products, thanks to the B-EBA cards and the Clonix U-Link receiver, is suitable for any protocol or product for access automation (including BFT products non-BFT ones and older versions) and it can be used in a variety of different sectors. This means any device becomes a smart device which can be interconnected with other systems, using a language that is becoming universal.



### U-Control HOME

U-Control HOME is the application that allows you to open the gate to your home and to remotely control BFT automations using your own smartphone. The iOS version can be used to automatically open the automation when you are close to it.



### U-Base 2

A software package for installation, performing maintenance and identifying any faults in the U-Link compatible operators, easily and conveniently.



### U-SDK

U-SDK is the application which allows BFT automations to be made compatible and easily integrated with a BMS network.



### Clonix U-Link

Connect non-native U-Link and non-BFT products to U-Link systems.

Is it possible to connect non-native U-Link BFT operators or other brands of products to U-Link? Yes, thanks to the Clonix receivers. Accessories which accept no limits.



### B-EBA

A direct link to your operators.

The B-EBA expansion cards make it possible to connect external devices such as PCs, smartphones or tablets to a BFT operator and a Clonix receiver or to connect multiple BFT products in a U-Link network. These accessories integrate with U-Link technology and with Bluetooth, Wifi, Z-Wave and TCP/IP protocols as well as with the RS485 serial interface. A device that demonstrates exactly what BFT means by interconnectivity.

