

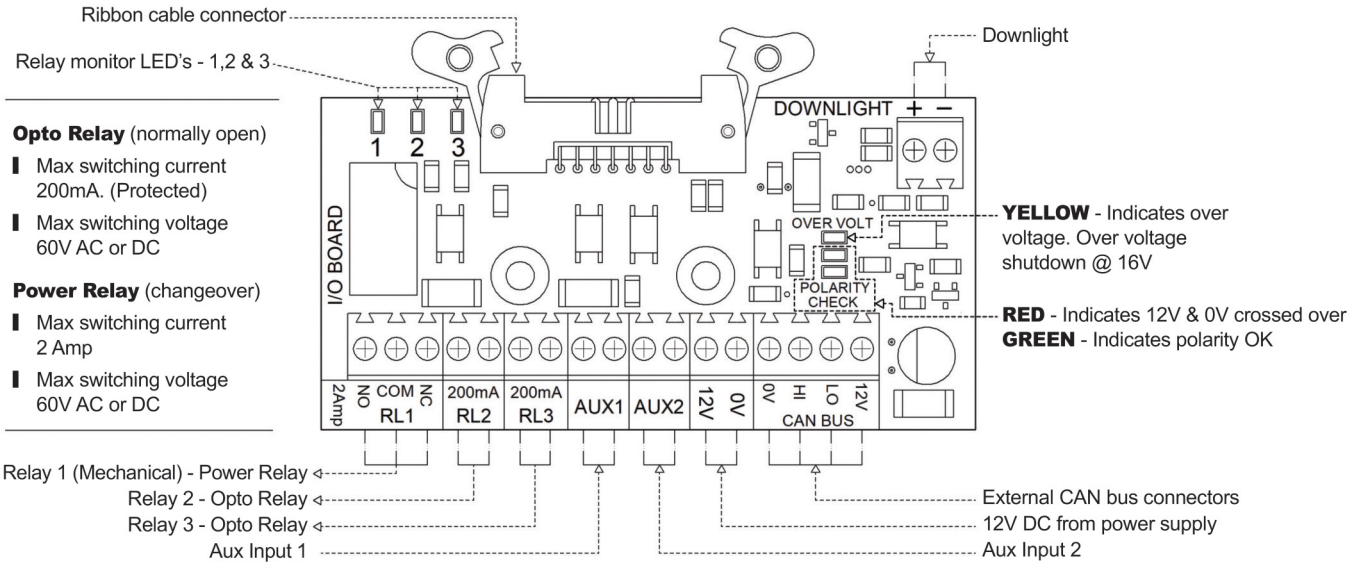
## 4G LTE INTERCOM

## INSTALLATION GUIDE

### 4G LTE I/O BOARD CONNECTIONS

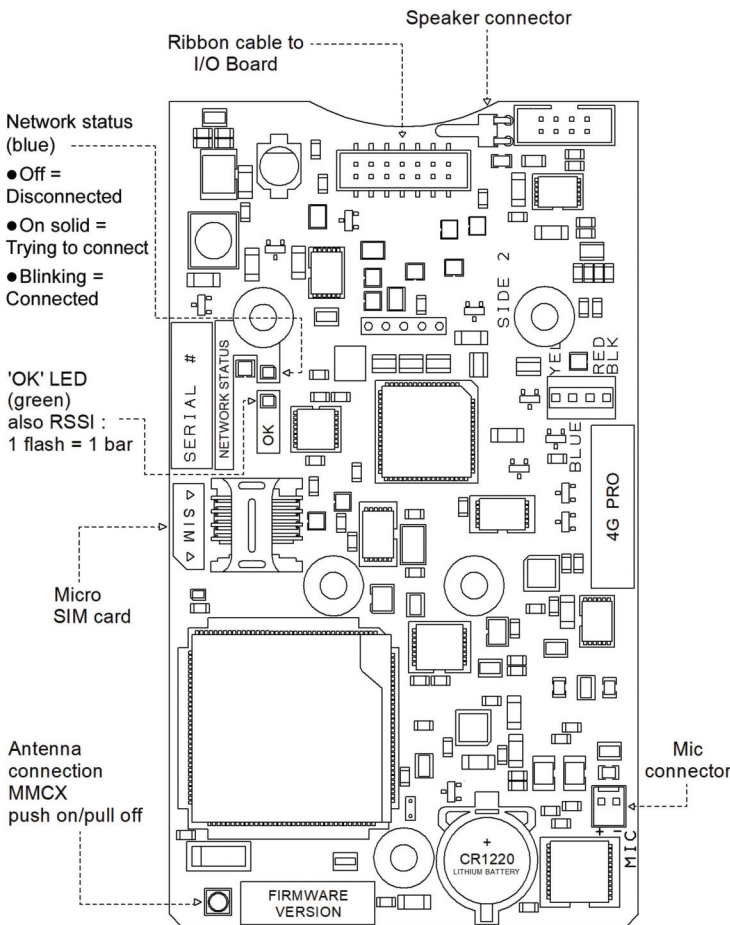


**A SITE SIGNAL NETWORK TEST IS TO BE UNDERTAKEN BEFORE INSTALLATION**



### 4G LTE PCB CONNECTIONS

### INSTALLATION TIPS



- Use the positioning template for the siting of the mounting holes.
- Ensure the unit is sealed to prevent water ingress.
- Use electronic grade silicone sealant to seal around all rear entry holes.
- Ensure antenna and power leads have a loop before entering the back of the unit to prevent water ingress along the cable.
- Use the black plastic gland M20 x 1.5mm, std electrical thread to secure the power and aerial leads.
- If drilling out the backbox or steel posts, no metal filings must be left in the backbox. The speaker has a magnet and may attract metal filings. Brush out the back box of all debris before screwing in the faceplate.
- Do a 4G signal test with a 4G analyser to ensure installation of the best sim card.
- Ensure the unit is turned off before inserting/removing the SIM and plugging in/unplugging the aerial.
- LED status lights: Green OK LED is multi purpose, it shows correct antenna connection, correct sim card installation and signal strength (RSSI).
- The blue LED is the network status LED.
- Use the faceplate parking slot for ease of installation.
- We strongly recommend the PIN Defaults are changed at the point of installation.
- For full installation manual visit [www.telguard.co.uk/support](http://www.telguard.co.uk/support)

The 4G antenna is an external item that should be installed in the most suitable position so that maximum signal strength is obtained and is more than 200mm from a human body.

This positioning should also allow for avoidance of any likely vandalism as is able.



Raising Standards  
Safety Assured



EU CE Declaration of Conformity and Radio Equipment Directive is available at [www.commtel-uk.com](http://www.commtel-uk.com) | GB-RH10 9XN



# 'COMMTEL GSM ONE' APP

# APP GUIDE

← Select Device

Select device or add a new one...

**Mr Jones**  
Phone: 07540293702  
NS: 885500

**Mr Sinclair**  
Phone: 07888551212  
NS: 955540

Device Selected:  
**Mr Jones**  
07540293702

**ADD DEVICE**   **CONTINUE**

?

← Setup

**Mr Jones**  
Phone: 07540293702

**CHANGE TELEPHONE NUMBERS**  
edit phone numbers called by buttons

**CHANGE PINS**  
edit keypad panel PIN codes

**AUTHORISED INCOMING CALLS**  
edit authorised caller numbers

**RENAME RELAYS**  
rename device's relays

?

← Telephone Numbers

**Mr Jones**  
Phone: 07540293702

**Call Button:**

Button 1:

1st number to be dialled:

Ring for (sec):

2nd number to be dialled:

Name:

Ring for (sec):

3rd number to be dialled:

Name:

Ring for (sec):

**UPDATE BUTTON PHONE NUMBERS**   **DELETE NUMBERS FROM BUTTONS**

?

← Select Device

Select PIN code or add a new one...

**PIN code: 1**  
Relay 1: Pulse  
Relay 2:   
Relay 3:

**PIN code: 2**  
Relay 1: Pulse  
Relay 2:   
Relay 3:

Select PIN Command:  
 Add/Edit PIN  
 Change the code  
 Delete PIN

**ADD PIN**

?

← Change PINs

**Mr Jones**  
Phone: 07540293702

**PIN:**

Relay Operations:  
Relay 1:   
Relay 2:   
Relay 3:

Select PIN Command:  
 Add/Edit PIN  
 Change the code  
 Delete PIN

**SEND COMMAND**

?

← Authorised Calls

**Mr Jones**  
Phone: 07540293702

Number to be authorised:

Name:

Relay Operators:  
Relay 1:   
Relay 2:   
Relay 3:

Authorised number Command:  
 Authorise only  
 Reject call & trigger relays  
 Answer (delay) or trigger relays  
 Delete authorised number

**SEND COMMAND**

?

← Rename Relays

**Mr Jones**  
Phone: 07540293702

Relay 1:

Relay 2:

Relay 3:

?

## ADDITIONAL MANUAL SMS COMMANDS

- Where you see SERIALNUM in the command alert, replace with the SERIALNUM of the panel to be programmed.
- Text the commands to the 'tel number' associated with the panel you wish to program.
- **Activate Timed Trade Button**  
To set up the trade button 07:00 to 17:30 Mon-Fri, first set the Time Profile by sending SERIALNUM profile 1 start 07:00 end 17:30 days Mo Tu We Th Fri And then set the Trade Button to use it by sending SERIALNUM trade periods 1 relay 1 pulse
- **Deactivate Timed Trade Button**  
To turn off the Trade Button, send the command SERIALNUM delete trade
- **Activate Aux Input 1 Triggered SMS Alerts**  
To set up SMS alert when aux input 1 is triggered for more than fifteen minutes and send the message to 'tel number'. SERIALNUM alert 1 aux 1 delay 900 send 'tel number' msg 'Your gates have been open for 15 minutes
- **Deactivate Aux Input 1 Triggered SMS Alerts**  
To turn off the aux input 1 SMS alert, send the SMS command SERIALNUM delete alert 1
- **Activate Recurring SMS Alerts**  
To set up SMS alert which is sent at regular six monthly intervals, starting on the 20th of November at 2.30pm and sending the SMS to 'tel number', send the SMS command SERIALNUM alert 5 recur every 6 months next 20/11/2019 14:30 send 'tel number' msg 'Your gates are due for servicing
- **Deactivate Recurring SMS Alerts**  
To turn off the recurring SMS alert, send the SMS command SERIALNUM delete alert 5
- **Check the Signal Level**  
To find out the mobile phone signal level of the panel, send the SMS command SERIALNUM get signal and wait for the reply