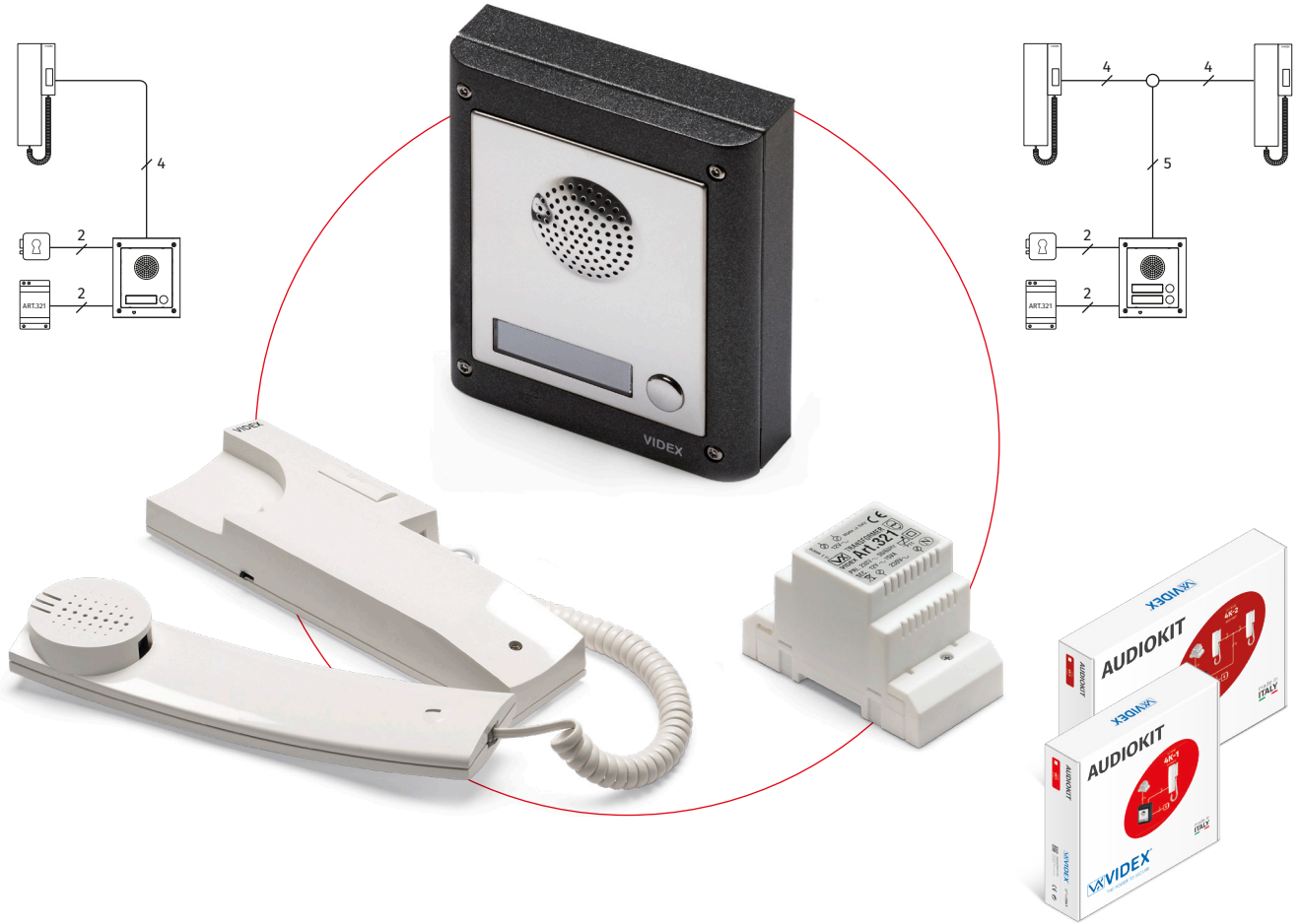
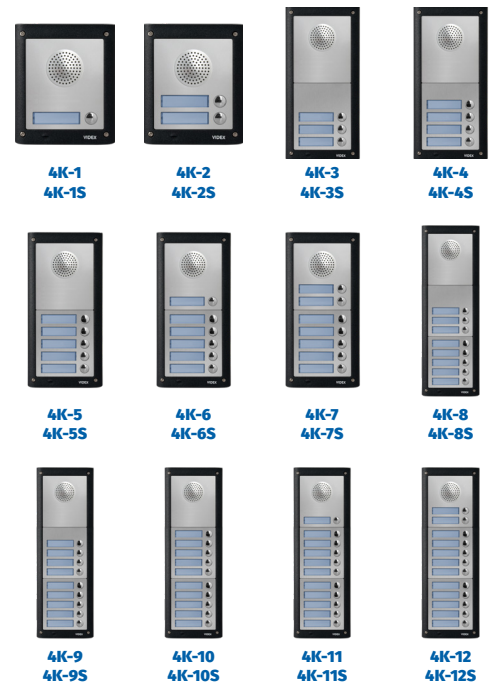


# 4K Audiokits

4000 Series Flush & Surface Audiokits



Part No.	4K-1	4K-1S	4K-2	4K-2S
<b>CONNECTION</b>	STANDARD 3+1 AUDIO			
<b>OUTDOOR STATION</b>	4000 Series			
<b>SPEAKER UNIT MODULE</b>	1 x 4836-1		1 x 4836-2	
<b>CALL BUTTONS</b>	1		2	
<b>DOOR OPENING</b>	Built-in Lock Relay (S/S1 normally open)			
<b>CALL</b>	Electronic Call Tone			
<b>MOUNTING BOX</b>	1 x 4851	1 x 4881	1 x 4851	1 x 4881
<b>RAINSHIELD OPTION*</b>	4871	4891	4871	4891
<b>SIZE</b>	1 module			
<b>MOUNTING</b>	Flush	Surface	Flush	Surface
<b>INDOOR STATION</b>	1 x 3011		2 x 3011	
<b>SERIES</b>	3000 Series Smart Range			
<b>CALL</b>	Electronic Call Tone			
<b>BUTTONS</b>	1: Door open			
<b>CONTROLS</b>	Call tone volume (3 Levels)			
<b>MOUNTING</b>	Surface			
<b>POWER SUPPLY UNIT</b>	1 x 321 (322 PSU supplied for 3 way kits and above)			
<b>INPUT/OUTPUT/VA</b>	230Vac / 12Vac / 15VA			
<b>SIZE</b>	3 Modules A Type DIN Box (52.5x105x65mm)			
<b>MOUNTING</b>	DIN bar or direct wall fixing			



\* To be ordered separately

**3 WAY UP TO 12 WAY 4K AUDIOKITS**

4K-3 up to 4K-12 flush kits and 4K-3S up to 4K-12S surface kits are also available with the appropriate 4836 speaker module, 4843, 4844 and/or 4845 button modules and the appropriate flush (4852, 4853) or surface (4882, 4883) back boxes included.

Please note that panel sizes and back box sizes will vary depending on the Audiokit required. Please also note that all kits are supplied with the appropriate number of 3011 audiophones, e.g. a 4K-6 flush kit will be supplied with 6x 3011 audiophones and so on.